

At HomeTM

Inspiring Your Home & Lifestyle

IN ARKANSAS

Kitchen & Bath Ideas

125
ways to update!



Polished & Practical

WRITER TIFFANY ADAMS
PHOTOGRAPHER RETT PEEK
STYLIST LAUREN CERRATO



A young family renovates two of a home's hardest-working rooms to maximize functionality and match their personal style

WHEN DRs. KIMBERLY AND KIRK REYNOLDS CALLED DESIGNER KRISTA LEWIS OF K. LEWIS INTERIOR DESIGN, THEY WANTED TO MAKE THEIR 1970s RANCH-STYLE HOUSE WORK FOR THEM AND THEIR THREE YOUNG CHILDREN. After listening to their wants and needs for the spaces, Krista knew she could help them achieve a more contemporary look and functional layout with the help of contractor Jon Callahan. "This house had more of a traditional flavor; there was a lot of beige and red, and it just didn't fit their style," Jon says. "They loved the location and wanted to make it more livable, and we were excited to help them do that."

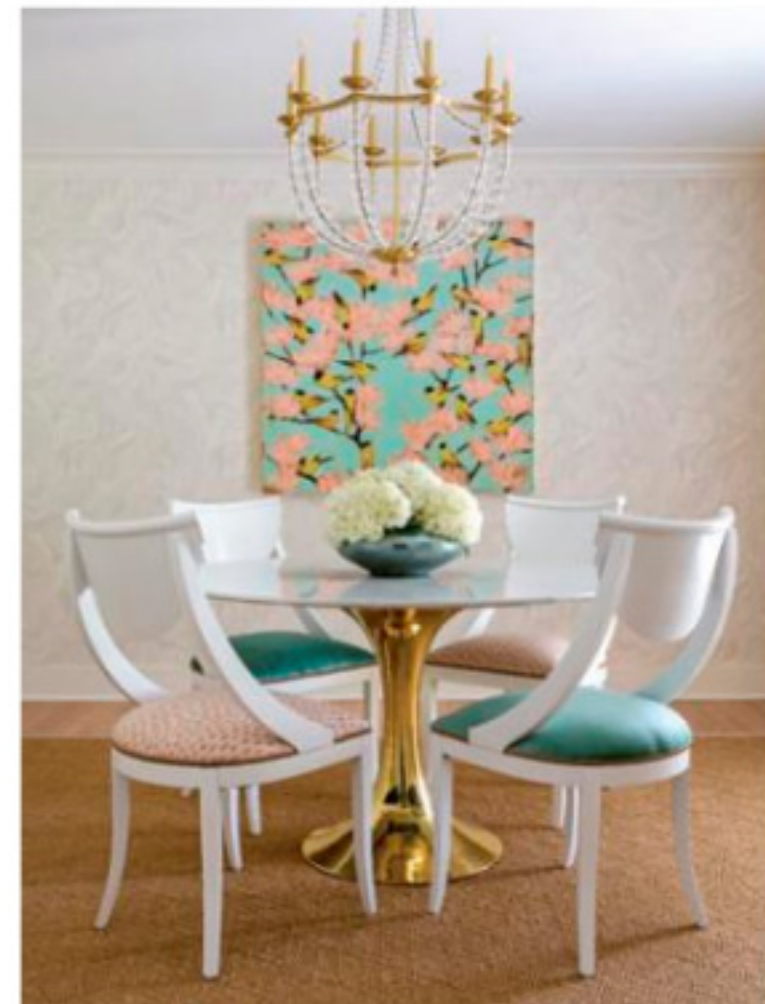
Starting in the kitchen, Jon and his team raised the roofline to allow for 10-foot ceilings, which brings in

more light and gives the feel of a larger space. Removing a wall opened up the kitchen to the family room, allowing the couple to see their kids play while they prepare meals or entertain friends. "Kirk is a true cook and put thought into the placement of the appliances and layout of the kitchen for functionality," Krista says. For example, the refrigerator, freezer, microwave, and a warming drawer sit against the back wall, while the stove and prep area are more centrally located. Additionally, cabinets were traded for deep drawers in both the island and much of the perimeter space. "The layout changed so much; it really works for them now," Krista says. "With the playroom, family room, and dining room all connecting to the kitchen, everything happens here."



WHIMSICAL DINING

Inspired by the palette of the Lisa Krannichfeld painting seen here, Krista notes the dining room has a slightly more “fancy” feel. The wallpaper and chandelier add to this vibe. Vintage dining chairs are covered in a family-friendly outdoor fabric, while the table has durable marble top.



In terms of aesthetics, the couple opted for an engineered quartz countertop to give the look of marble with extreme durability. “We did a waterfall edge on both ends of this countertop to make it a little more contemporary,” Krista says. Other features such as the blue hexagon backsplash and the mix of black and brass light fixtures add to this feel. “Their previous house was midcentury modern so you can also see some carryovers in this design,” Krista says pointing to the breakfast table and chairs.

In the master bath, the square footage stayed the same but the space was gutted and rearranged to streamline the design. “The tub was on a deck before; we modernized this by swapping it for a freestanding version,” Jon says. Upper cabinetry was removed to make the room feel larger and to create more countertop space. Heated floors and a steam shower provide the comforts of a retreat for the busy parents, while polished accents elevate the look. “The brass inlay on the tile really makes this design feel young and the space feel special,” Krista says.



See before photos of the bath and kitchen as well as a revised floor plan on our blog (athomearkansas.com/blog).

VANITY FLAIR

The U-shaped vanity area features his and her spaces on opposite walls with a central area where Kimberly can sit to apply makeup. Natural light pours in from a window on the opposite wall, while chic pendants provide additional task lighting.



Design Resources

CONTRACTOR Jon Callahan, Jon Callahan Construction **INTERIOR DESIGN** Krista Lewis, K. Lewis Interior Design **ACCESSORIES, FABRICS, FURNITURE, LIGHTING, MIRRORS, RUGS, TILE, WALLPAPER, AND WINDOW COVERINGS** K. Lewis Interior Design **APPLIANCES** Metro Appliances & More **ART** Lisa Krannichfeld and Catherine Nugent, both via M2 Gallery **CABINETRY AND HARDWARE** Capitol Custom Cabinets **COUNTERTOPS (KITCHEN)** Stone World Designs **COUNTERTOPS (BATHROOM)** Inside Effects **FIXTURES** Southern Pipe & Supply **MILLWORK AND PAINTING** Jon Callahan Construction **PAINT** Sherwin-Williams